

YOUR LOCAL INDEPENDENT ESTATE AGENCY
ESTABLISHED SINCE 1938

MANNS
& MANNS
EST. 1938

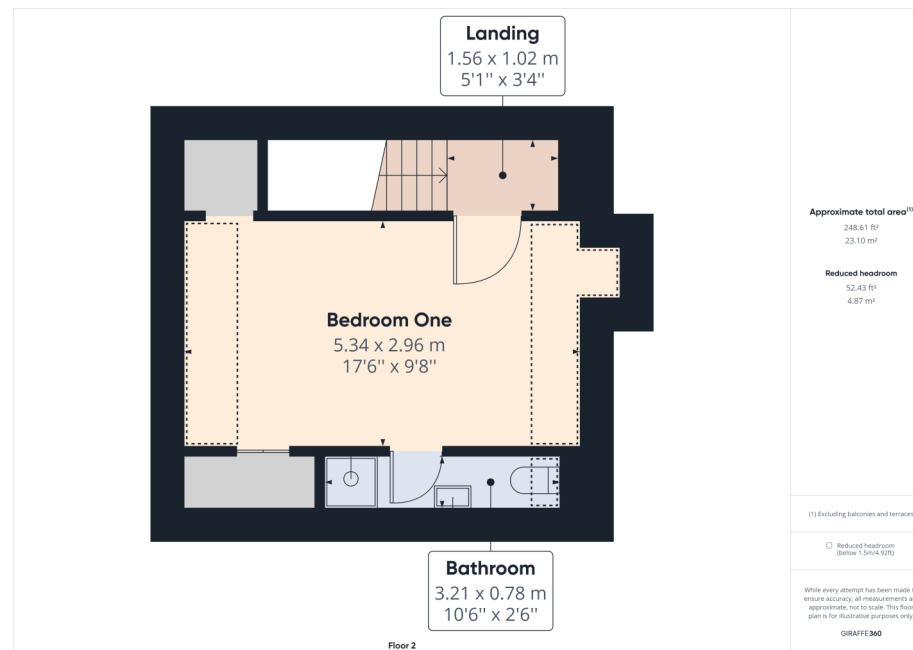
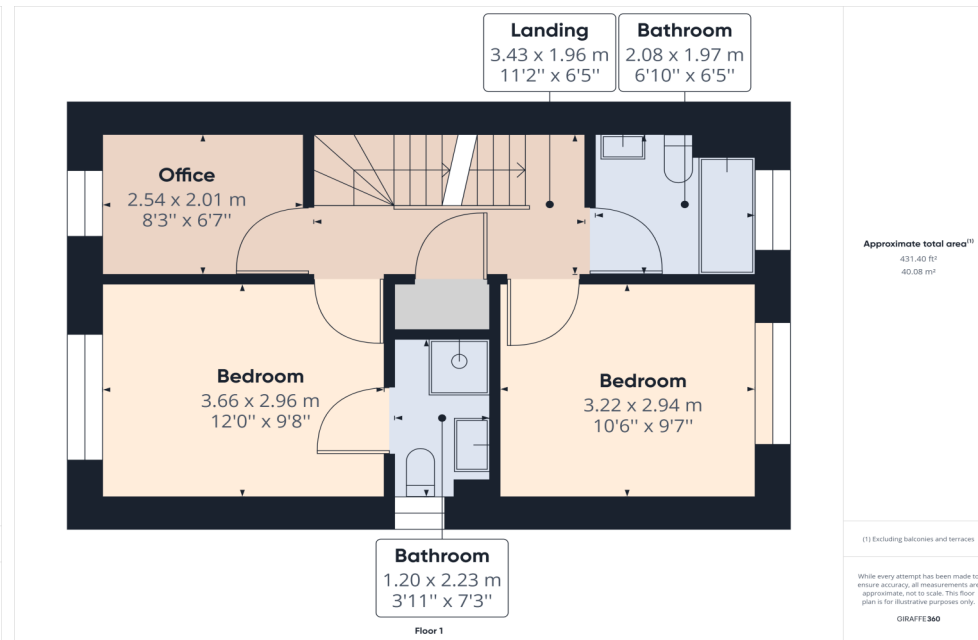
VIEWINGS AVAILABLE 7 DAYS A WEEK
TEL: 02380 404055

TUTOR CLOSE, HAMBLE, SOUTHAMPTON SO31 4RU



EXTENDED LINK DETACHED FOUR BEDROOM PROPERTY SITUATED IN A POPULAR RESIDENTIAL LOCATION IN HAMBLE. AN EARLY VIEWING IS A MUST TO APPRECIATE THE ACCOMMODATION ON OFFER.

Guide Price £450,000 to £475,000 Freehold



THE PROPERTY

A charming four bedroom extended family home situated in a quiet cul de sac position and is within walking distance of Hamble Village centre, local shops and train station. The property is arranged over three floors and comprises of cloakroom, living room, kitchen/family room to the ground floor. First floor has three bedrooms, one with an ensuite and the family bathroom. The top floor boasts a large master bedroom with ensuite. Externally there is enclosed rear garden, garage and off road parking.

THE LOCAL AREA

Hamble-Le-Rice is a picturesque Village situated on the South Coast of England, renowned for the local sailing facilities, Marinas, Sailing Clubs, eating and drinking establishments and beautiful Riverside walks.

Whilst the village has retained its character, the surrounding area has grown to support three marinas and a host of shops, pubs and restaurants, services and businesses. There are woodland and coastal walks to enjoy, two country parks are situated nearby; The Royal Victoria Country Park and Manor Farm Country Park.

The community benefits from local junior and senior schools, children's clubs, Hamble Parish Council, and library. The sporting opportunities include sailing clubs such as the Hamble River Sailing Club, Royal Southern Yacht Club, RAF Sailing Club etc. Within Hamble, there are three marinas; Hamble Point Marina, Port Hamble Marina and Mercury Marina.

Hamble Point Marina offers 230 berths and lies at the mouth of the River Hamble, with easy access to the world famous waters of the Solent, a magnet for competitive sailors from around the globe, it's a favourite with racing and cruising yachtsman alike.

Port Hamble Marina offers 310 berths is situated on the River Hamble in the heart of the South Coast's sailing scene. The marina has a proud heritage of refitting and maintaining racing yachts, a tradition that continues today with many different yacht services based at the marina.

Offering 360 berths the Mercury Marina was originally built by Sir Robin Knox Johnson, Mercury Yacht Harbour is situated in a sheltered wooded site where the shallow waters of Badnam Creek join the River Hamble. The marina offers deep water at all states of tide and among its excellent facilities are a chandlery as well as a bar and restaurant with waterfront views.

Hamble is also renowned for its restaurants and public houses. Traditional public houses include: The Victory Inn, The Bugle and Ye Olde Whyte Harte. Some of the other restaurants include: River Rat Cellar & Kitchen, La Dolce Vita, Cinnamon Bay, Banana Wharf and the King and Queen.

Hamble is easily accessible by a range of public transport links. It has bus routes running from the Southampton City Centre to Hamble and vice versa, train station with lines to Southampton Central and Portsmouth Harbour and the Pink Ferry service from Hamble to Warsash.

By car, Hamble is approximately 3 miles from M27 J8.





GROUND FLOOR

ENTRANCE HALL Smooth plastered and coved ceiling. Consumer unit, stairs to first floor landing, dado radiator, single radiator and power point.

CLOAKROOM Front elevation obscure glaze window to the front elevation, WC, wash hand basin, radiator, thermostat value, tiled to principal areas and laminate flooring.

LIVING ROOM 4.43M Reducing to 3.91M X 3.87M Reducing to 2.92M Smooth plastered and coved ceiling with central ceiling light. Front elevation double glazed window, thermostat valve, gas fireplace with pine surround and marble hearth. Ample power points, TV aerial point, part glazed door leading to the: -

OPENPLAN KITCHEN FAMILY ROOM 4.926M X 3.53M Smooth plastered ceiling, recessed spot lighting, window to side elevation window, radiator with thermostat valve. White high gloss matching floor and wall mounted units. Double NEFF oven with brushed steel matching extractor above. Five ring hob, matching upstands to the work surfaces, integrated full height Bosch fridge and freezer. Bosch integrated washing machine, Bosch integrated dishwasher, space for a tumble dryer, tiled floor, flagstone flooring throughout, opening to the: -

FAMILY AREA 5.03M X 4.23M Smooth plastered ceiling, central light, four lightwells, double glazed window to rear elevation, UPVC Bi-fold doors which open to the outside decking. Flagstone flooring throughout. Log burning stove.

OUTSIDE

The rear garden is bounded by timber fencing with an array of shrubs. There is decking area and pedestrian door to the garage. Two outside wall lights.

To the front of the property there is a tarmac driveway with off road parking, up and over door leading to the garage, front garden area mainly laid to lawn and decorative boarders.

GARAGE 5.89M X 3.15M Pitched tiled roof with up and over door. Pedestrian door. Worcester gas fired boiler, eaves storage, power and light. Garage opening width 2.13M Max.





FIRST FLOOR

LANDING Smooth and plastered ceiling, door to all principal rooms, power point, linen cupboard housing the hot water tank and shelving. Stairs to second floor.

BEDROOM TWO 2.92M X 3.60m Smooth and coved ceiling, central ceiling light, front elevation double glazed window, single radiator with thermostat valve. Door leading to the:

EN-SUITE Smooth plastered ceiling, extractor, light, side elevation double glazed window, WC, wash hand basin. Shower cubicle, tiling to principal area, single radiator with thermostat valve.

BEDROOM THREE 2.91M X 3.17M Smooth plastered and coved ceiling, double glazed window to the rear elevation. Single radiator with thermostat valve and ample power points.

BEDROOM FOUR 2.50M X 1.95M Smooth plastered and coved ceiling, central ceiling light, front double-glazed window, laminate flooring and ample power points.

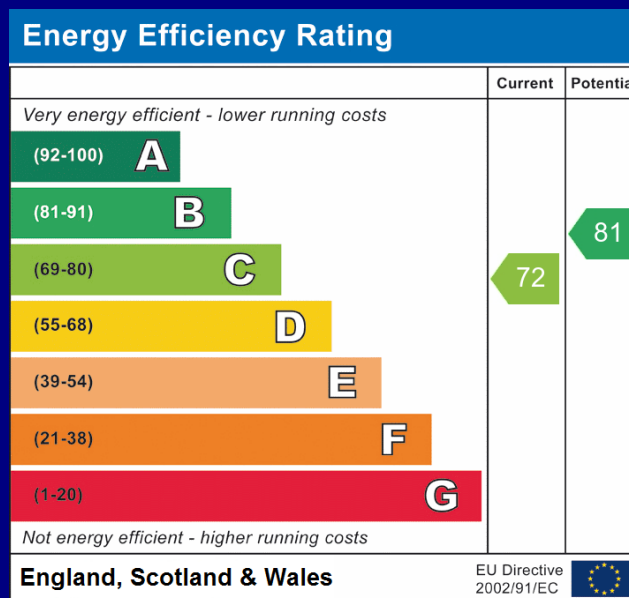
BATHROOM Smooth plastered ceiling, central ceiling light extractor fan, double glazed window to the rear elevation window, panelled bath with telephone style shower attachment. WC, wash hand basin, tiling to principal area, laminate flooring with tile effect. Single radiator with thermostat valve.

SECOND FLOOR

LANDING Smooth plastered ceiling, recessed spotlight, power point and velux window.

BEDROOM ONE 5.22M X 2.92M Smooth plastered sloping ceiling (restricted head room) spotlights, Velux window to front and rear. Double radiator with thermostat value. Laminate flooring, built in cupboards to the eaves, door to:

En-suite Smooth plastered ceiling, extractor, spotlight, wash hand basin, shower cubicle, tiling to the principal areas, radiator with thermostat valve.



COUNCIL TAX BAND E

**Viewings strictly by appointment
with Manns and Manns only. To
arrange a viewing please contact us
on 02380 404055.**

Tel: 02380 404055 Web: www.mannsandmanns.co.uk



**1 & 2 Brooklyn Cottages,
Portsmouth Road,
Southampton,**



Disclaimer: Manns & Manns for themselves and together the vendors advise that these particulars do not constitute an offer or a contract and whilst these details are believed to be correct they are made without responsibility. All applicants must satisfy themselves by inspection as to the correctness of the statements made. The property is offered subject to formal contract and is being unsold
AND ON THE DISTINCT UNDERSTANDING THAT ALL NEGOTIATIONS SHALL BE CONDUCTED THROUGH MANNS AND MANNS.

Nothing in these particulars shall be deemed to be a statement that the property is in good repair or condition or otherwise, nor that services or facilities are in good working order. All areas and measurements are approximate. Any reference to alterations or use is not intended to be a statement that any necessary planning, building regulation, listed building or any other consent has been obtained.

No fixtures and fittings are included in any sale of a property, unless explicitly agreed in writing with the agent once agreed with the seller (s).

Manns and Manns may use AI images to show empty properties with furniture, this is purely provided as a guide. Fixtures and fittings are not included, and purchasers must satisfy themselves with their own measurements to check furniture of their choosing fits the relevant spaces.