

YOUR LOCAL INDEPENDENT ESTATE AGENCY  
ESTABLISHED SINCE 1938

**MANNNS**  
**& MANNNS**  
EST. 1938

VIEWINGS AVAILABLE 7 DAYS A WEEK  
TEL: 02380 404055



**YARDLEY ROAD  
HEDGE END  
SOUTHAMPTON  
SO30 0HQ**



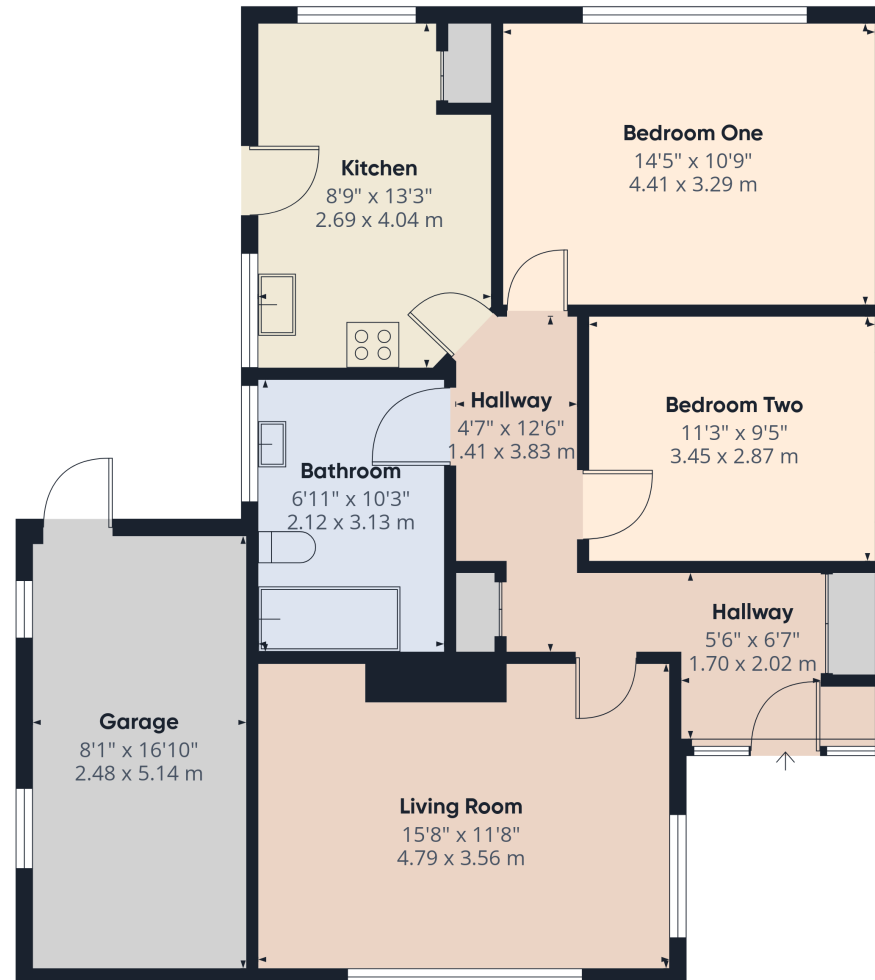
**ATTENTION INVESTORS. LOVELY TWO BEDROOM DETACHED BUNGALOW OCCUPYING A SIZEABLE PLOT IN THE POPULAR RESIDENTIAL VILLAGE OF HEDGE END. A FANTASTIC MODERNISATION OPPORTUNITY, THIS DELIGHTFUL PROPERTY IS PRIMED AND READY TO BE TRANSFORMED INTO A BEAUTIFUL HOME. NO FORWARD CHAIN.**

**Guide Price £375,000 Freehold**

This lovely two bedroom detached bungalow is situated in a popular residential area in Hedge End. The property is built of brick elevations to the exterior, under a pitched tiled roof, and benefits from electric fired heating and partial double glazing. This bungalow requires modernisation and presents the discerning purchaser a wealth of potential for extension and redevelopment, subject to the relevant planning permissions. Currently configured as a two bedroom dwelling, there is a living room, kitchen and bathroom. Outside are pretty gardens front and rear, a driveway and garage.

The dwelling is conveniently situated for Hedge End village centre which hosts a variety of shops and amenities. There is a good choice of primary and secondary schools within the vicinity. Hedge End Retail Park is nearby, which offers an array of larger stores and supermarkets. Ideally set, just moments from popular commuter routes with easy access by car to junction 8 of the M27.

Don't miss out on the opportunity to make this your new home. Call us today to arrange a viewing.



Approximate total area<sup>(1)</sup>  
 888 ft<sup>2</sup>  
 82.5 m<sup>2</sup>

(1) Excluding balconies and terraces

Calculations reference the RICS IPMS 3C standard. Measurements are approximate and not to scale. This floor plan is intended for illustration only.

GIRAFFE360





### Accommodation


The property welcomes you into the hallway offering doors to all rooms and two storage cupboards. The living room is located at the front of the dwelling. This is a lovely bright space with windows to the front and side aspects allowing plenty of natural light into the space. The kitchen comprises wall and base units with a worksurface over. There is a pantry style cupboard and appliance space for white goods. The kitchen benefits from windows to the side and rear aspects with a door opening out to steps leading into the rear garden. Bedroom one is a well-proportioned double room with a rear elevation window offering pretty views over the rear garden. Bedroom two, a further double, benefits from a window to the side aspect. The bathroom offers a bath with an electric shower over, wash hand basin and a WC.

### Outside

The property is approached via double timber gates which open to reveal a driveway leading to the garage with an up and over door to the front aspect. The garage offers a pedestrian door to the rear. The front garden is largely laid to lawn with borders containing various plants and shrubs. A pedestrian gate to the side of the property provides access into the rear garden.

The sizeable and enclosed rear garden has been lovingly cared for and is predominantly laid to lawn. There are a number of established plants, shrubs and trees offering a splash of colour during the spring and summer months. A patio area provides a lovely spot for al-fresco dining.



Energy Efficiency Rating		
	Current	Potential
Very energy efficient - lower running costs		
(92+) <b>A</b>		
(81-91) <b>B</b>		
(69-80) <b>C</b>		<b>71</b>
(55-68) <b>D</b>		
(39-54) <b>E</b>		
(21-38) <b>F</b>		
(1-20) <b>G</b>	<b>11</b>	
Not energy efficient - higher running costs		
<b>England, Scotland &amp; Wales</b>	EU Directive 2002/91/EC	



**COUNCIL TAX BAND: D Eastleigh Borough Council. Charges for 2026/27 £2343.04.**

**UTILITIES: Mains electricity, water and drainage.**

**NOTE: The property is not currently registered with Land Registry.**

**Viewings strictly by appointment with Manns and Manns only. To arrange a viewing please contact us.**

Tel: 02380 404055

Web: [www.mannsandmanns.co.uk](http://www.mannsandmanns.co.uk)



1 & 2 Brooklyn Cottages  
Portsmouth Road  
Southampton  
SO31 8EP



Disclaimer: Manns & Manns for themselves and together the vendors advise that these particulars do not constitute an offer or a contract and whilst these details are believed to be correct they are made without responsibility. All applicants must satisfy themselves by inspection as to the correctness of the statements made. The property is offered subject to formal contract and is being unsold AND ON THE DISTINCT UNDERSTANDING THAT ALL NEGOTIATIONS SHALL BE CONDUCTED THROUGH MANNS AND MANNNS.

Nothing in these particulars shall be deemed to be a statement that the property is in good repair or condition or otherwise, nor that services or facilities are in good working order. All areas and measurements are approximate. Any reference to alterations or use is not intended to be a statement that any necessary planning, building regulation, listed building or any other consent has been obtained.

No fixtures and fittings are included in any sale of a property, unless explicitly agreed in writing with the agent once agreed with the seller (s).

Manns and Manns may use AI images to show empty properties with furniture, this is purely provided as a guide. Fixtures and fittings are not included, and purchasers must satisfy themselves with their own measurements to check furniture of their choosing fits the relevant spaces.