

YOUR LOCAL INDEPENDENT ESTATE AGENCY
ESTABLISHED SINCE 1938

MANNNS
& MANNNS
EST. 1938

VIEWINGS AVAILABLE 7 DAYS A WEEK
TEL: 02380 404055

ESTRIDGE CLOSE, BURSLEDON, SOUTHAMPTON, SO31 8FN



THREE BEDROOM SEMI-DETACHED PROPERTY IDEALLY SITUATED FOR VILLAGE LIVING IN A POPULAR RESIDENTIAL AREA WITH A DRIVEWAY, GARAGE, AND GARDEN. NO FORWARD CHAIN.

£275,000 Freehold

The Property

This lovely semi-detached property was originally built in the 1970s of brick elevations to the exterior under a pitched tiled roof, as a four-bedroom house. It has since been changed to a three-bedroom house, which has created a sizable master bedroom. It has gas fired heating and double glazing. The property is conveniently situated for Lowford Village amenities, which include a community centre, library, cafe, convenience store, public house and takeaways. Bursledon Infant and Junior Schools are under half a mile away on foot. Regular bus services run between Southampton and Portsmouth City Centre's via Lowford Village and junction 8 of the M27 lies approximately 1 mile away.

Briefly, the ground floor comprises a porch, living/dining room and a kitchen. On the first floor are three bedrooms and a bathroom. Externally, there is a garage and driveway providing off-road parking. At the rear of the property is an enclosed, split-level garden.

Offered with no forward chain, this property will undoubtedly prove popular with buyers. Don't miss out on the opportunity to make this your next home, call us today to arrange a viewing.

The Local Area

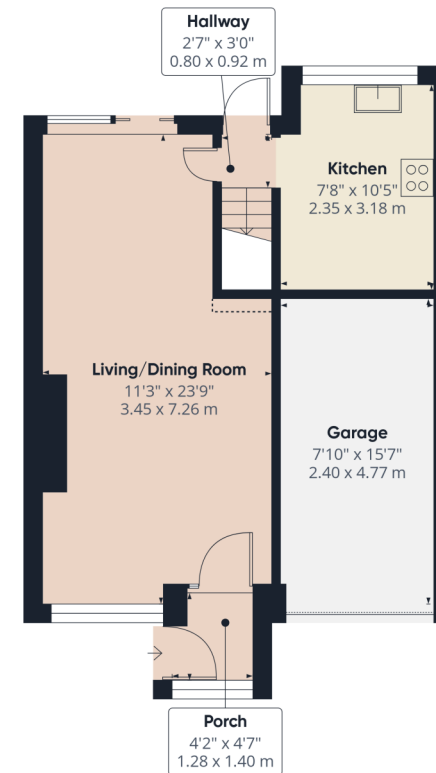
Bursledon is a picturesque village situated on the River Hamble in Hampshire, renowned for its outstanding natural beauty. Located within the borough of Eastleigh and close to the city of Southampton, Bursledon has a railway station, marina, dockyards and the Bursledon Windmill. Nearby villages include Swanwick, Hamble-le-Rice, Netley and Sarisbury Green.

Bursledon's waterside location and woodland surroundings made it a natural location for building wooden ships. Numerous vessels were built for the Royal Navy at private shipyards at Bursledon. By the 1870s, the shipbuilding trade had disappeared from Bursledon and the main industry was arable agriculture, particularly the growing of strawberries.

Locally, there are several pubs and restaurants to try, but if you'd like to stretch your legs a little more, you can take a stroll to the waterside villages that line the Hamble's route to the sea. The local church, St Leonard's in Old Bursledon traces its history back to the twelfth century.

Local schools include Bursledon Infant and Junior Schools and The Hamble School for students aged 11-16.

The area has excellent transport links via a train station, and the M27 motorway that links the neighbouring cities of Southampton, Portsmouth, and Winchester. Nearby Southampton Airport Parkway train station it is an approximately a 1 hour 20 minutes ride to London Waterloo.



Approximate total area⁽¹⁾

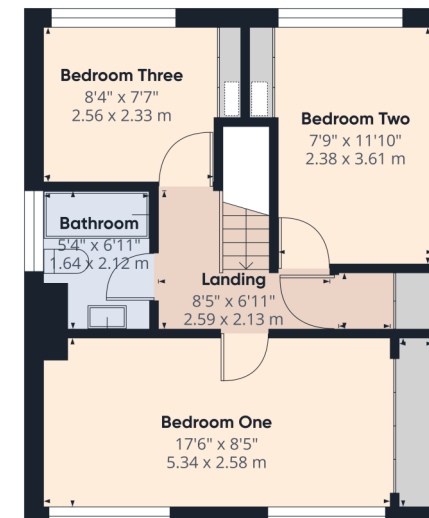
898 ft²

83.3 m²

Reduced headroom

3 ft²

0.2 m²



(1) Excluding balconies and terraces

Reduced headroom

..... Below 5 ft/1.5 m

Calculations reference the RICS IPMS 3C standard. Measurements are approximate and not to scale. This floor plan is intended for illustration only.

GIRAFFE360



Ground Floor Accommodation

Upon stepping into the property, you are welcomed into an enclosed porch offering space to remove your outdoor wear. A door opens into the living/dining room a well-proportioned and inviting space. This lovely light filled room benefits from a window to the front elevation and sliding patio doors to the rear opening onto the patio, making this the ideal space to entertain visiting guests.





The kitchen, presents a rear aspect window looking over the rear garden and comprises a range of wall and floor mounted units with a worksurface over. There is a built under oven, four ring gas hob with an extractor above and appliance space for white goods. A doorway from the kitchen leads to the hall area with stairs rising to the first floor and a pedestrian door into the rear garden.

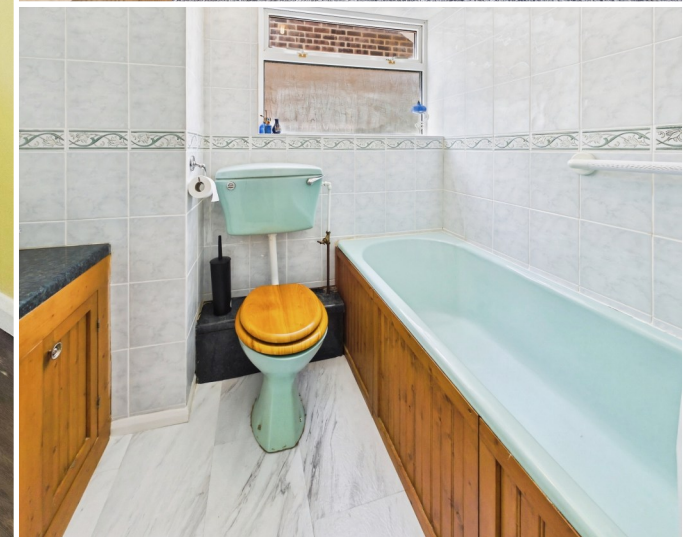




First Floor Accommodation

Ascending to the first floor, the landing presents doors to all rooms and a loft hatch into the attic space. An airing cupboard offers useful storage and houses the hot water tank. Bedroom one is a well-proportioned double room with fitted wardrobes to one wall providing plentiful storage. This room is filled with natural light with two front aspect windows.

Bedroom two, a further double, offers a built in cupboard and a rear elevation window with views over the rear garden. Bedroom three, also to the rear aspect, benefits from a window looking over the garden and a built in cupboard providing storage. The bathroom presents tiled walls and a side aspect obscured window. The three-piece suite comprises a panel enclosed bath with a shower over, inset wash hand basin with storage beneath, and a WC.



Outside

The property is approached by a driveway providing off road parking and leading to the garage. The garage, which benefits from power and lighting, offers an up and over door to the front aspect. The front garden is laid to lawn with decorative planted borders containing a mixture of plants and shrubs. The split-level, enclosed rear garden is bound by timber fencing. A block paved patio, adjacent to the dwelling, provides a lovely spot for al fresco dining. Steps from the patio lead to the tiered garden which contains a number of trees and shrubs.



EPC to follow

COUNCIL TAX BAND: C - Eastleigh Borough Council. Charges for 2026/27 £2052.91.

UTILITIES: Mains gas, electricity, water and drainage.

Viewings strictly by appointment with Manns and Manns only. To arrange a viewing please contact us.

Tel: 02380 404055 Web: www.mannsandmanns.co.uk

1 & 2 Brooklyn Cottages
Portsmouth Road
Southampton
SO31 8EP



Disclaimer: Manns & Manns for themselves and together the vendors advise that these particulars do not constitute an offer or a contract and whilst these details are believed to be correct they are made without responsibility. All applicants must satisfy themselves by inspection as to the correctness of the statements made. The property is offered subject to formal contract and is being unsold AND ON THE DISTINCT UNDERSTANDING THAT ALL NEGOTIATIONS SHALL BE CONDUCTED THROUGH MANNs AND MANNs.

Nothing in these particulars shall be deemed to be a statement that the property is in good repair or condition or otherwise, nor that services or facilities are in good working order. All areas and measurements are approximate. Any reference to alterations or use is not intended to be a statement that any necessary planning, building regulation, listed building or any other consent has been obtained.

No fixtures and fittings are included in any sale of a property, unless explicitly agreed in writing with the agent once agreed with the seller (s).

Manns and Manns may use AI enhanced images to add blue skies or show empty properties with furniture, this is purely provided as a guide. Fixtures and fittings are not included, and purchasers must satisfy themselves with their own measurements to check furniture of their choosing fits the relevant spaces.